

Madison, Wisconsin

INDEX OF SHEETS

| SHEET NO. | TITLE |
|-----------|-------------------------|
| 1 | |
| U1-U5 | SEWER PLAN & PROFILE |
| U6 | SANITARY SEWER SCHEDULE |

CITY OF MADISON

CITY ENGINEERING DIVISION

DEPARTMENT OF PUBLIC WORKS

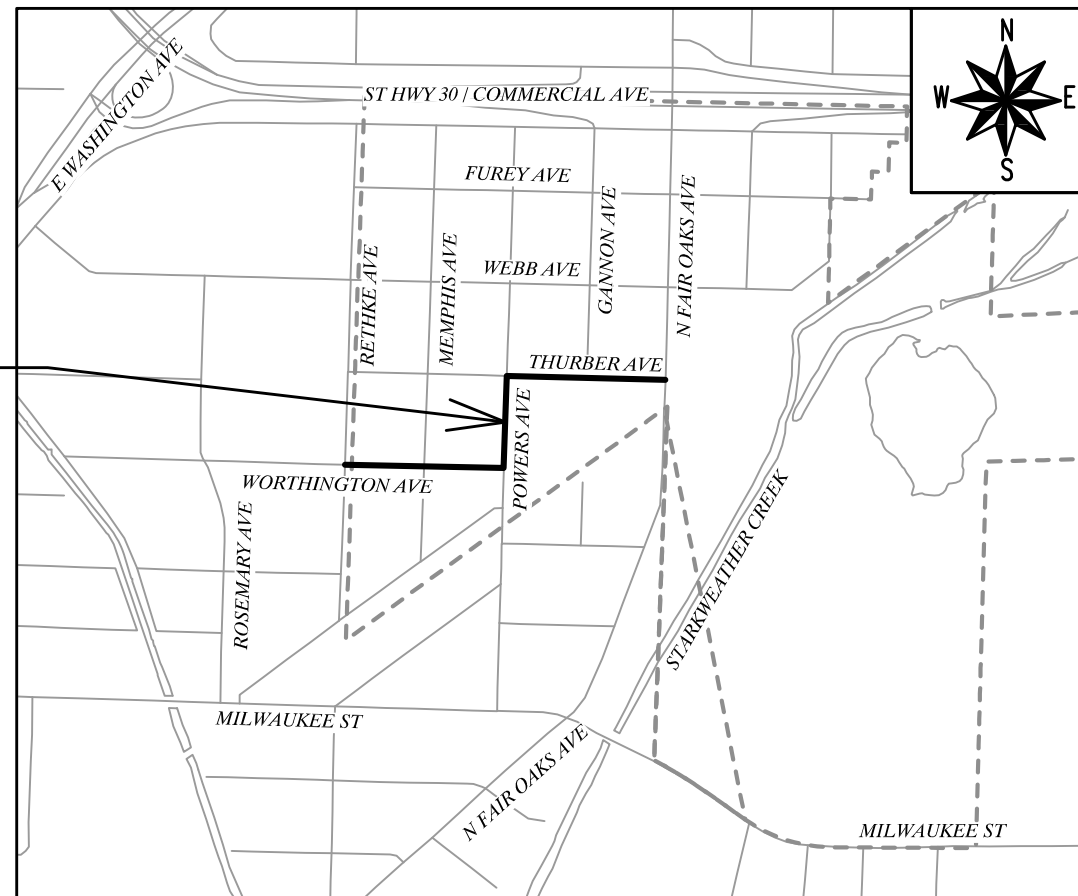
PLAN OF PROPOSED IMPROVEMENT

WORTHINGTON AVE., POWERS AVE., & THURBER AVE. SANITARY REPLACEMENT ASSESSMENT DISTRICT - 2022

CITY PROJECT NO. 13800
CONTRACT NO. 9103

| CONVENTIONAL SIGNS | |
|---|---------|
| FIELD VERIFY ALL UTILITY LOCATIONS | |
| GAS | — G — |
| STORM SEWER | — ST — |
| SANITARY SEWER | — SAN — |
| WATER | — W — |
| BURIED ELECTRIC | — E — |
| OVERHEAD ELECTRIC | — OH — |
| POWER POLE | □ |
| ADA COMPLIANT RAMP W/ DETECTABLE WARNING FIELD | ▣ |
| COMBUSTIBLE FLUIDS | ★ |

PROJECT LOCATION



NOTES:

ALL GUTTERS SHALL DRAIN WITH A MINIMUM GRADE OF 0.50% TOWARD STORM SEWER INLETS.

SIDEWALK RAMPS SHALL HAVE A MAXIMUM SLOPE OF 1" PER 12". SIDEWALK AND CURB RAMPS SHALL BE CONSTRUCTED WITH A SIDE SLOPE OF 2.00%. SIDEWALK SHALL HAVE A MINIMUM LONGITUDINAL SLOPE OF 0.50% AND A MAXIMUM LONGITUDINAL SLOPE OF 5.00% EXCEPT WHERE STREET GRADES EXCEED 5.00%.

PUBLIC IMPROVEMENT PROJECT APPROVED

APRIL 19, 2022

BY THE COMMON COUNCIL OF MADISON, WISCONSIN

PUBLIC IMPROVEMENT DESIGN APPROVED BY:

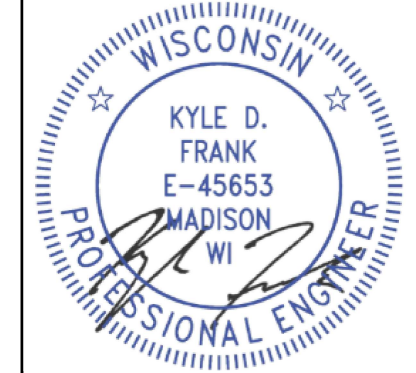
Greg Fries

Apr 29, 2022

City Engineer

Date

SANITARY SEWER DESIGNED BY:



Apr 29, 2022

UTILITY CONTACTS

SANITARY SEWER:
CITY OF MADISON ENGINEERING
CONTACT: KYLE FRANK
608-266-4098
KFRANK@CITYOFMADISON.COM

STORM SEWER:
TOWN OF BLOOMING GROVE
CONTACT: MIKE WOLF
608-223-1104
BGADMIN@BLMGROVE.COM

WATER:
CITY OF MADISON WATER UTILITY
CONTACT: JEFF BELSHAW
608-206-3856
JBELSHAW@MADISONWATER.ORG

GAS:
MADISON GAS & ELECTRIC COMPANY
CONTACT: ROGER AHLES
608-252-5682
RAHLES@MGE.COM

ELECTRIC:
MADISON GAS & ELECTRIC COMPANY
CONTACT: MARK BOHM
608-252-4730
MBOHM@MGE.COM

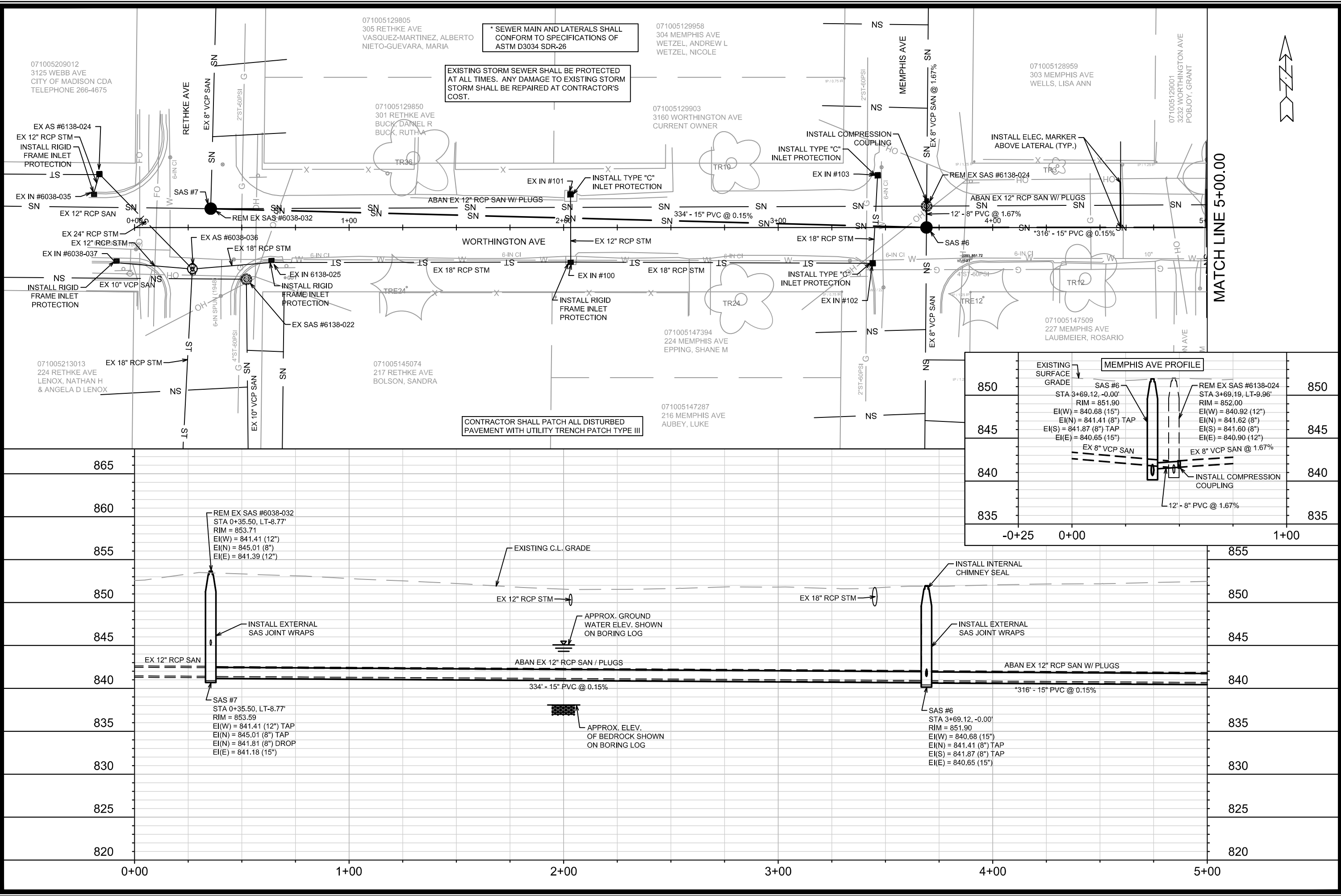
TOWN OF BLOOMING GROVE PRIMARY CONTACT
CONTACT: MIKE WOLF
608-223-1104
BGADMIN@BLMGROVE.COM

PLOT SCALE: 1 IN=1 FT_XREF

PLOT NAME: ----

REV. DATE: 4/26/2022 9:07 AM

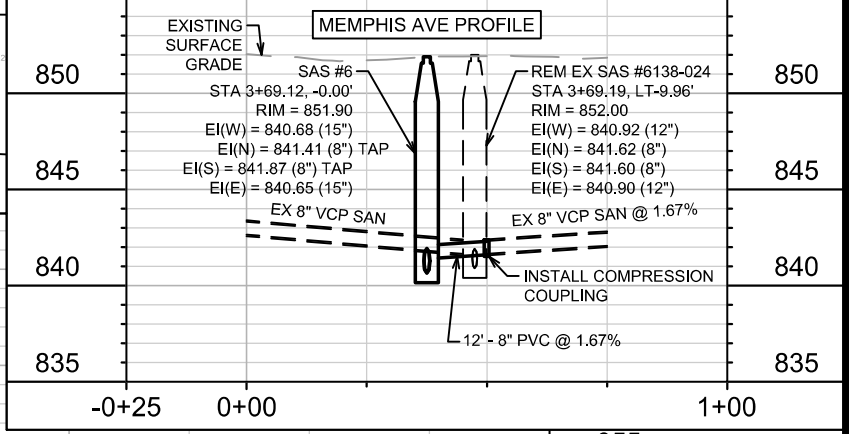
ORIGINATOR: CITY_OF_MADISON



* SEWER MAIN AND LATERALS SHALL CONFORM TO SPECIFICATIONS OF ASTM D3034 SDR-26

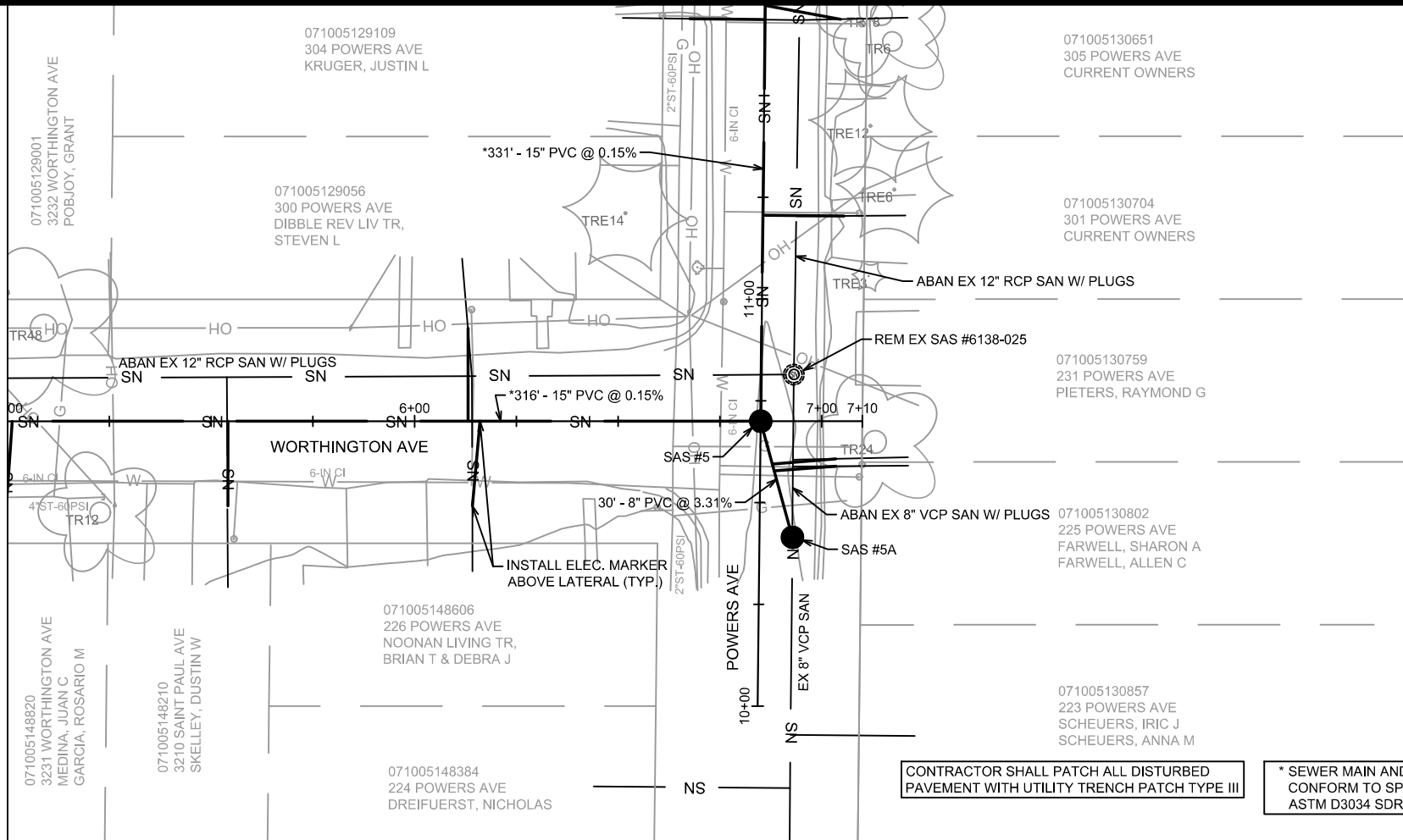
EXISTING STORM SEWER SHALL BE PROTECTED AT ALL TIMES. ANY DAMAGE TO EXISTING STORM SHALL BE REPAIRED AT CONTRACTOR'S COST.

CONTRACTOR SHALL PATCH ALL DISTURBED PAVEMENT WITH UTILITY TRENCH PATCH TYPE III



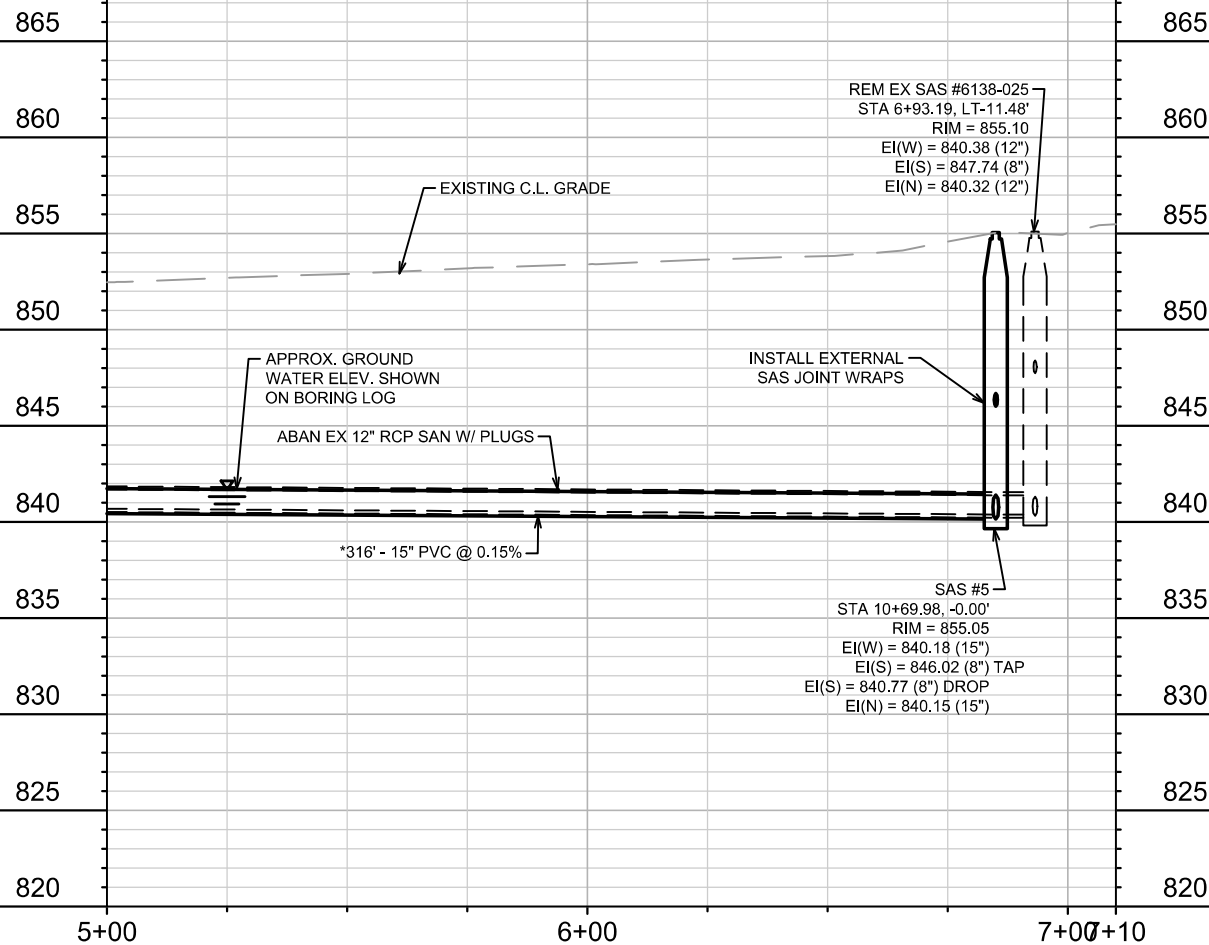
| | | |
|---|--------------------------|-----|
| DATE | BY | U-1 |
| REVISION | | |
| MARK | | |
| DESIGNED BY: KDF | DATE: 4/28/2022 12:44 PM | |
| 13800 | | |
| 13800 | | |
| MADISON, WI | | |
| CONTRACT NO: 9103 | | |
| SEWER PLAN AND PROFILE - WORTHINGTON AVE | | |
| WORTHINGTON, POWERS, & THURBER ASSESSMENT DIST - 2022 | | |
| M:\DESIGN\Projects\13800\CAD\Sewer\13800SWR-PipeNetwork.dwg | | |
| | | |
| 13800 | | |
| U-1 | | |

MATCH LINE 5+00.00



CONTRACTOR SHALL PATCH ALL DISTURBED PAVEMENT WITH UTILITY TRENCH PATCH TYPE III

* SEWER MAIN AND LATERALS SHALL CONFORM TO SPECIFICATIONS OF ASTM D3034 SDR-26

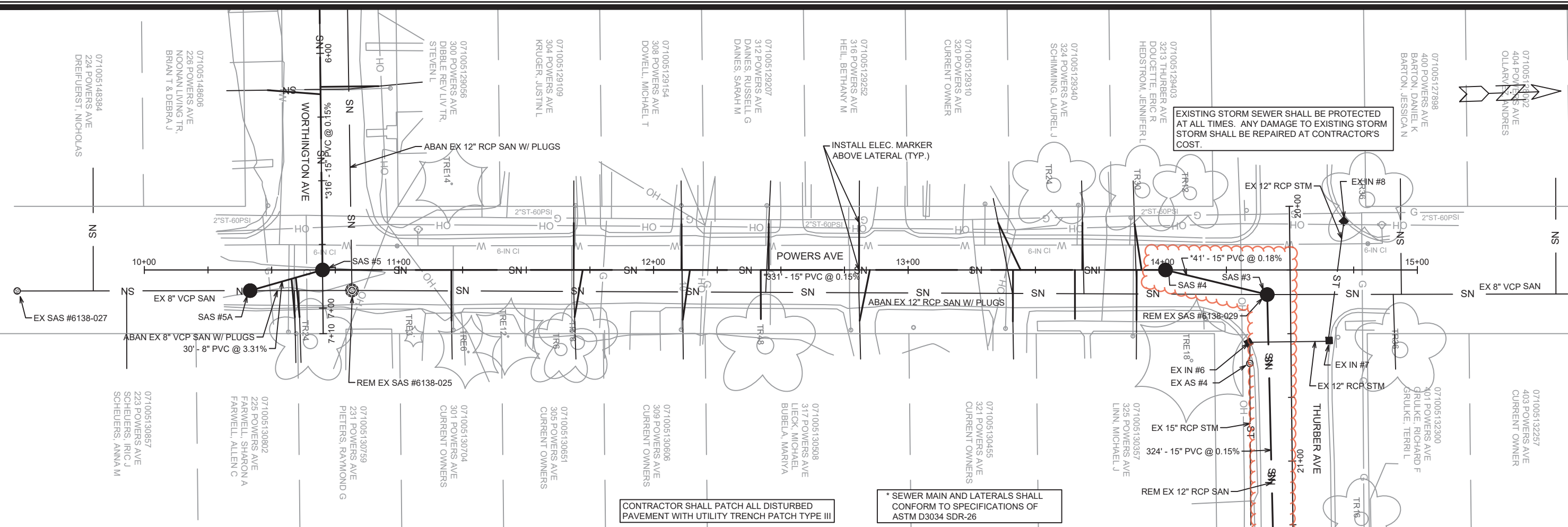


13800
 MADISON, WI
 CONTRACT NO: 9103

SEWER PLAN AND PROFILE - WORTHINGTON AVE
 WORTHINGTON, POWERS, & THURBER ASSESSMENT DIST - 2022
 M:\DESIGN\Projects\13800\CAD\Sewers\13800SWR-PipeNetwork.dwg



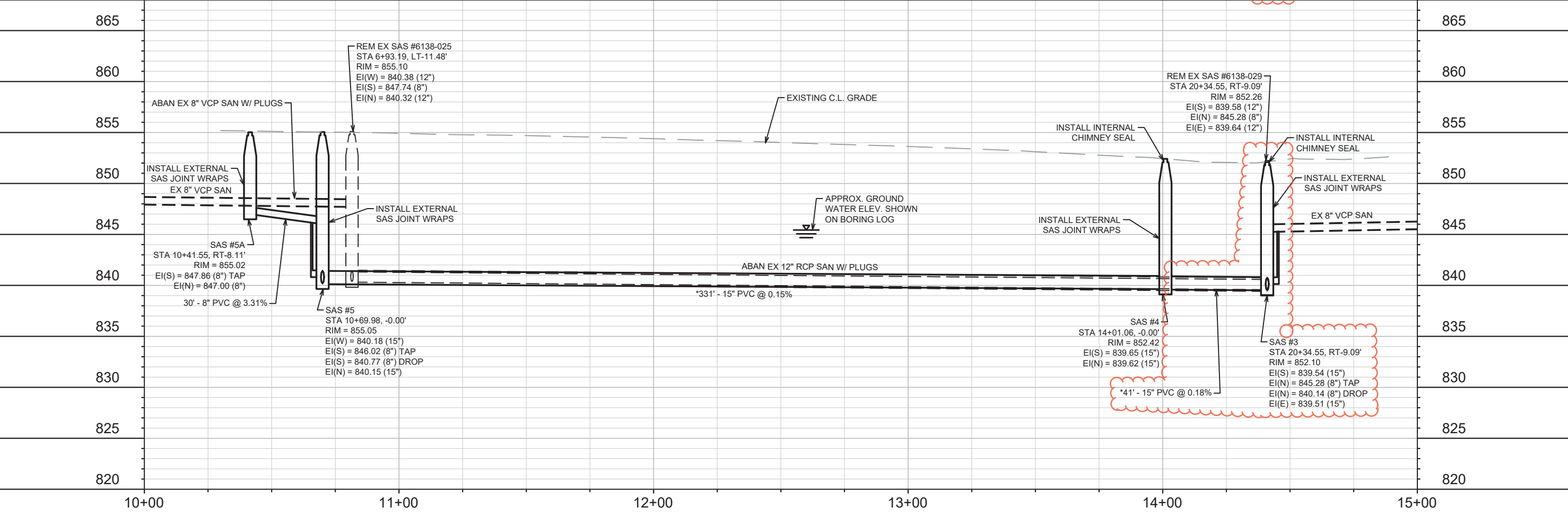
13800
 U-2



CONTRACTOR SHALL PATCH ALL DISTURBED PAVEMENT WITH UTILITY TRENCH PATCH TYPE III

* SEWER MAIN AND LATERALS SHALL CONFORM TO SPECIFICATIONS OF ASTM D3034 SDR-26

EXISTING STORM SEWER SHALL BE PROTECTED AT ALL TIMES. ANY DAMAGE TO EXISTING STORM SEWER SHALL BE REPAIRED AT CONTRACTOR'S COST.



| | | | | | |
|-------------------------------------|--|---|--|-------------------|--|
| 13800 | | MADISON, WI | | CONTRACT NO: 9103 | |
| SEWER PLAN AND PROFILE - POWERS AVE | | WORTHINGTON, POWERS, & THURBER ASSESSMENT DIST - 2022 | | U-3 | |
| | | | | | |
| 13800 | | U-3 | | U-3 | |

M:\DESIGN\Projects\13800\CAD\Sewers\13800SWR-PipeNetwork.dwg

Scale: 1" = 40'

Date: 6/27/2022 12:09 PM

Designed By: KDF

MARK

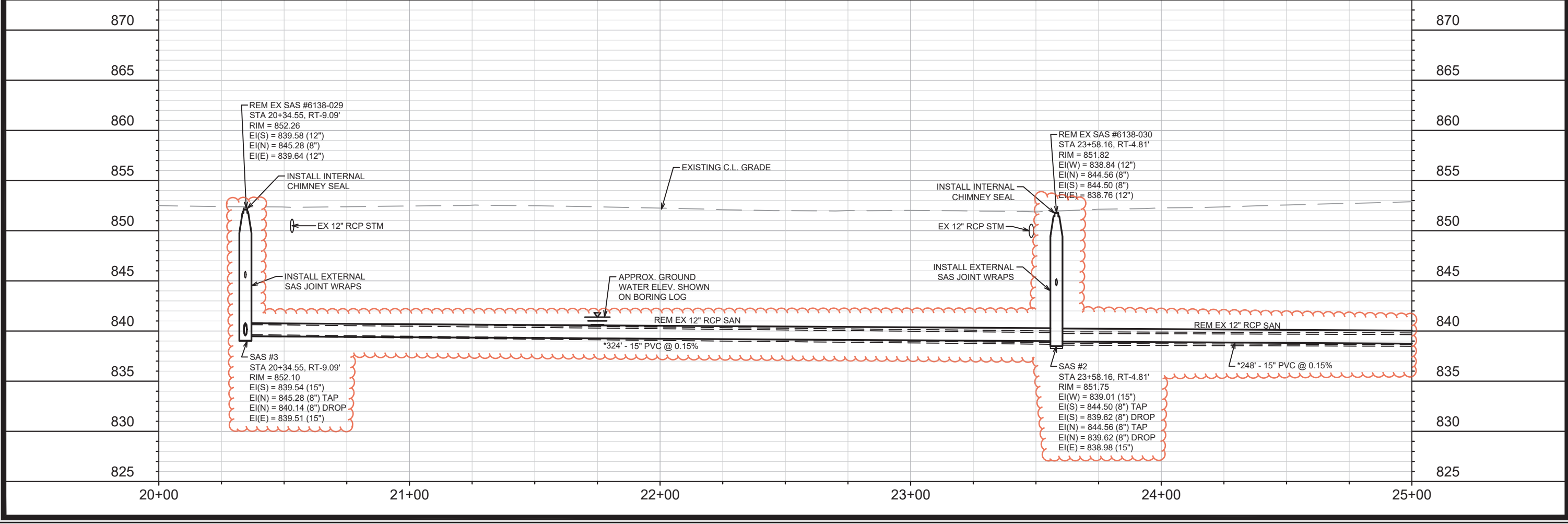
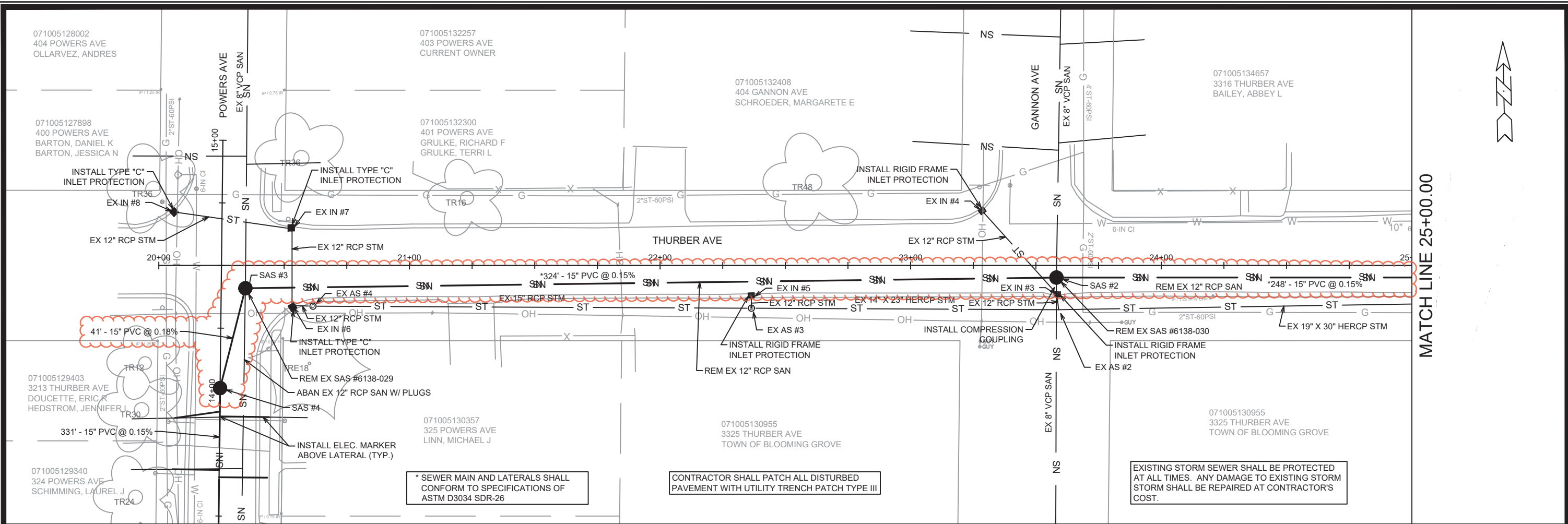
REVISION

DATE

BY

6/22/22

KDF



* SEWER MAIN AND LATERALS SHALL CONFORM TO SPECIFICATIONS OF ASTM D3034 SDR-26

CONTRACTOR SHALL PATCH ALL DISTURBED PAVEMENT WITH UTILITY TRENCH PATCH TYPE III

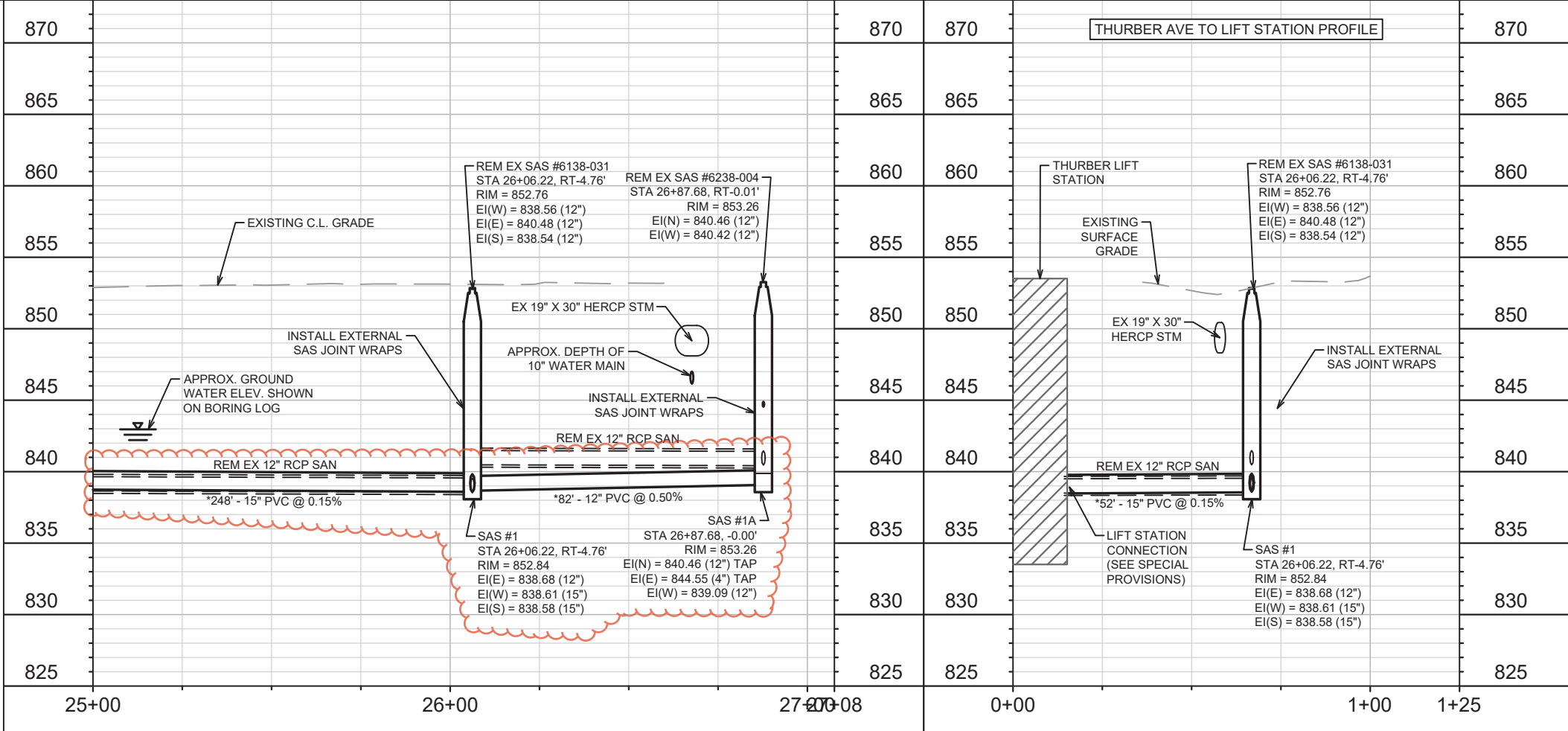
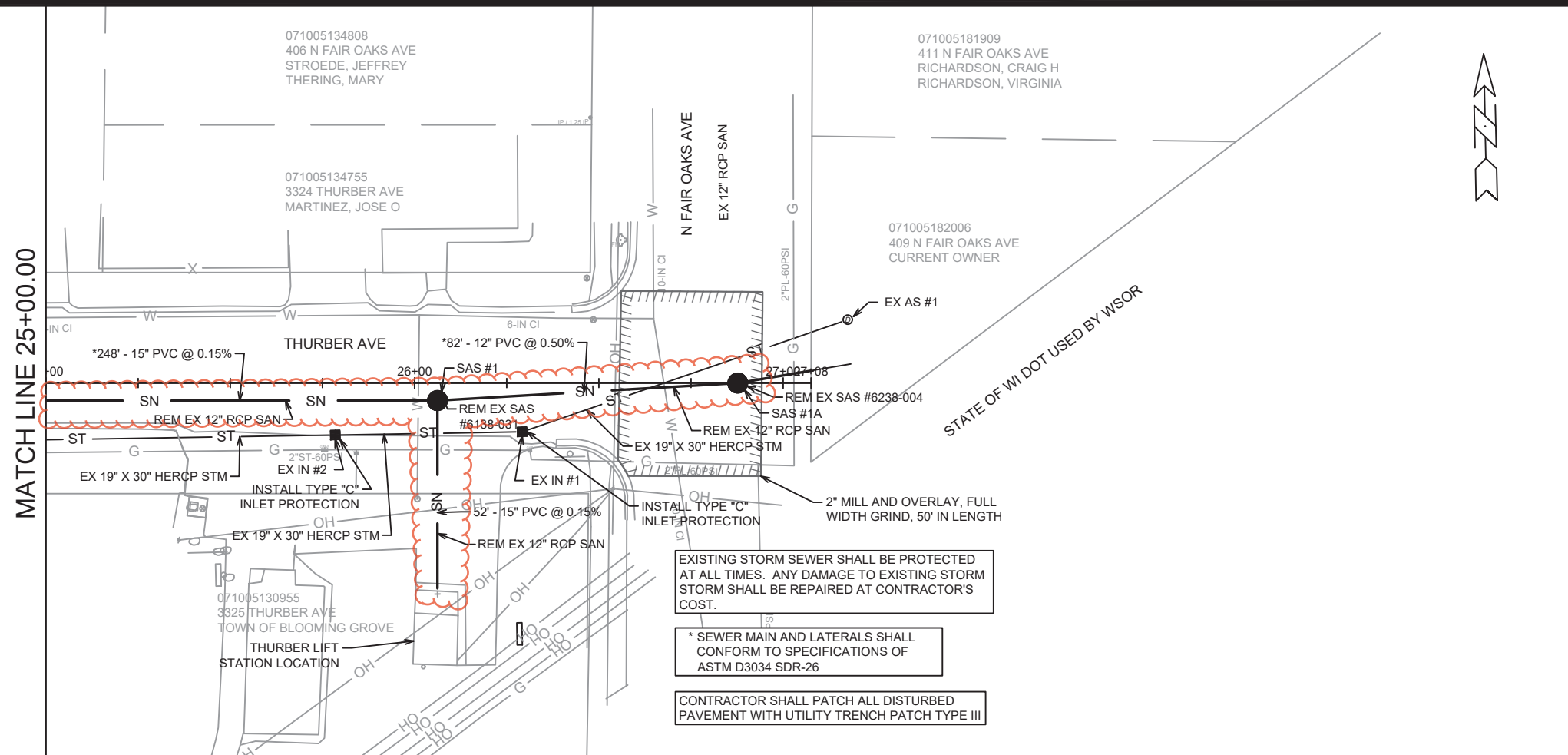
EXISTING STORM SEWER SHALL BE PROTECTED AT ALL TIMES. ANY DAMAGE TO EXISTING STORM SEWER SHALL BE REPAIRED AT CONTRACTOR'S COST.

MATCH LINE 25+00.00

| | | | |
|--|--|--|--|
| 071005128002 404 POWERS AVE OLLARVEZ, ANDRES | 071005132257 403 POWERS AVE CURRENT OWNER | 071005132408 404 GANNON AVE SCHROEDER, MARGARETE E | 071005134657 3316 THURBER AVE BAILEY, ABBEY L |
| 071005127898 400 POWERS AVE BARTON, DANIEL K BARTON, JESSICA N | 071005132300 401 POWERS AVE GRULKE, RICHARD F GRULKE, TERRI L | | |
| 071005129403 3213 THURBER AVE DOUCETTE, ERIC R HEDSTROM, JENNIFER L | 071005130357 325 POWERS AVE LINN, MICHAEL J | 071005130955 3325 THURBER AVE TOWN OF BLOOMING GROVE | 071005130955 3325 THURBER AVE TOWN OF BLOOMING GROVE |
| 071005129340 324 POWERS AVE SCHIMMING, LAUREL J | | | |

| | | |
|---|-------------|------|
| 13800 | MADISON, WI | 9103 |
| SEWER PLAN AND PROFILE - THURBER AVE | | |
| WORTHINGTON, POWERS, & THURBER ASSESSMENT DIST - 2022 | | |
| CONTRACT NO: | | |
| U-4 | | |

| | | |
|------------------|-------------------------|-----------------|
| MARK | DATE | BY |
| SAN SWR | 6/2/22 | KDF |
| REVISION | | |
| DESIGNED BY: KDF | DATE: 6/2/2022 12:16 PM | SCALE: 1" = 40' |
| 13800 | | U-4 |



| | | | |
|------|-------------|--------|-----|
| MARK | DESIGNED BY | DATE | BY |
| 1 | KDF | 6/2/22 | KDF |
| 2 | KDF | 6/2/22 | KDF |
| 3 | KDF | 6/2/22 | KDF |
| 4 | KDF | 6/2/22 | KDF |
| 5 | KDF | 6/2/22 | KDF |
| 6 | KDF | 6/2/22 | KDF |
| 7 | KDF | 6/2/22 | KDF |
| 8 | KDF | 6/2/22 | KDF |
| 9 | KDF | 6/2/22 | KDF |
| 10 | KDF | 6/2/22 | KDF |
| 11 | KDF | 6/2/22 | KDF |
| 12 | KDF | 6/2/22 | KDF |
| 13 | KDF | 6/2/22 | KDF |
| 14 | KDF | 6/2/22 | KDF |
| 15 | KDF | 6/2/22 | KDF |
| 16 | KDF | 6/2/22 | KDF |
| 17 | KDF | 6/2/22 | KDF |
| 18 | KDF | 6/2/22 | KDF |
| 19 | KDF | 6/2/22 | KDF |
| 20 | KDF | 6/2/22 | KDF |
| 21 | KDF | 6/2/22 | KDF |
| 22 | KDF | 6/2/22 | KDF |
| 23 | KDF | 6/2/22 | KDF |
| 24 | KDF | 6/2/22 | KDF |
| 25 | KDF | 6/2/22 | KDF |
| 26 | KDF | 6/2/22 | KDF |
| 27 | KDF | 6/2/22 | KDF |
| 28 | KDF | 6/2/22 | KDF |
| 29 | KDF | 6/2/22 | KDF |
| 30 | KDF | 6/2/22 | KDF |
| 31 | KDF | 6/2/22 | KDF |
| 32 | KDF | 6/2/22 | KDF |
| 33 | KDF | 6/2/22 | KDF |
| 34 | KDF | 6/2/22 | KDF |
| 35 | KDF | 6/2/22 | KDF |
| 36 | KDF | 6/2/22 | KDF |
| 37 | KDF | 6/2/22 | KDF |
| 38 | KDF | 6/2/22 | KDF |
| 39 | KDF | 6/2/22 | KDF |
| 40 | KDF | 6/2/22 | KDF |
| 41 | KDF | 6/2/22 | KDF |
| 42 | KDF | 6/2/22 | KDF |
| 43 | KDF | 6/2/22 | KDF |
| 44 | KDF | 6/2/22 | KDF |
| 45 | KDF | 6/2/22 | KDF |
| 46 | KDF | 6/2/22 | KDF |
| 47 | KDF | 6/2/22 | KDF |
| 48 | KDF | 6/2/22 | KDF |
| 49 | KDF | 6/2/22 | KDF |
| 50 | KDF | 6/2/22 | KDF |
| 51 | KDF | 6/2/22 | KDF |
| 52 | KDF | 6/2/22 | KDF |
| 53 | KDF | 6/2/22 | KDF |
| 54 | KDF | 6/2/22 | KDF |
| 55 | KDF | 6/2/22 | KDF |
| 56 | KDF | 6/2/22 | KDF |
| 57 | KDF | 6/2/22 | KDF |
| 58 | KDF | 6/2/22 | KDF |
| 59 | KDF | 6/2/22 | KDF |
| 60 | KDF | 6/2/22 | KDF |
| 61 | KDF | 6/2/22 | KDF |
| 62 | KDF | 6/2/22 | KDF |
| 63 | KDF | 6/2/22 | KDF |
| 64 | KDF | 6/2/22 | KDF |
| 65 | KDF | 6/2/22 | KDF |
| 66 | KDF | 6/2/22 | KDF |
| 67 | KDF | 6/2/22 | KDF |
| 68 | KDF | 6/2/22 | KDF |
| 69 | KDF | 6/2/22 | KDF |
| 70 | KDF | 6/2/22 | KDF |
| 71 | KDF | 6/2/22 | KDF |
| 72 | KDF | 6/2/22 | KDF |
| 73 | KDF | 6/2/22 | KDF |
| 74 | KDF | 6/2/22 | KDF |
| 75 | KDF | 6/2/22 | KDF |
| 76 | KDF | 6/2/22 | KDF |
| 77 | KDF | 6/2/22 | KDF |
| 78 | KDF | 6/2/22 | KDF |
| 79 | KDF | 6/2/22 | KDF |
| 80 | KDF | 6/2/22 | KDF |
| 81 | KDF | 6/2/22 | KDF |
| 82 | KDF | 6/2/22 | KDF |
| 83 | KDF | 6/2/22 | KDF |
| 84 | KDF | 6/2/22 | KDF |
| 85 | KDF | 6/2/22 | KDF |
| 86 | KDF | 6/2/22 | KDF |
| 87 | KDF | 6/2/22 | KDF |
| 88 | KDF | 6/2/22 | KDF |
| 89 | KDF | 6/2/22 | KDF |
| 90 | KDF | 6/2/22 | KDF |
| 91 | KDF | 6/2/22 | KDF |
| 92 | KDF | 6/2/22 | KDF |
| 93 | KDF | 6/2/22 | KDF |
| 94 | KDF | 6/2/22 | KDF |
| 95 | KDF | 6/2/22 | KDF |
| 96 | KDF | 6/2/22 | KDF |
| 97 | KDF | 6/2/22 | KDF |
| 98 | KDF | 6/2/22 | KDF |
| 99 | KDF | 6/2/22 | KDF |
| 100 | KDF | 6/2/22 | KDF |

13800 MADISON, WI CONTRACT NO: 9103

SEWER PLAN AND PROFILE - THURBER AVE

WORTHINGTON, POWERS, & THURBER ASSESSMENT DIST - 2022

U-5

M:\DESIGN\Projects\13800\CAD\Sewers\13800SWR-PipeNetwork.dwg

13800 U-5

SANITARY SEWER SCHEDULE

*REV 6/2/2022 KDF

| | |
|---|------------------|
| WORTHINGTON, POWERS, & THURBER ASSESSMENT DIST - 2022 | SHEET NO. U-6 |
| PROJECT NO. 13800 SANITARY SEWER SCHEDULE CITY OF MADISON | |

PROPOSED SANITARY STRUCTURES

| SAS NO. | STATION | LOCATION (OFFSET) | TOP OF CASTING | E.I. | DEPTH | NOTES |
|------------------------|----------|-------------------|----------------|--------|-------|----------|
| THURBER AVE | | | | | | |
| * SAS #1 | 26+06.22 | RT-4.76 | 852.84 | 838.58 | 14.26 | [1] |
| SAS #1A | 26+87.68 | CL | 853.26 | 839.09 | 14.17 | [1] |
| * SAS #2 | 23+58.16 | RT-4.81 | 851.75 | 838.98 | 12.77 | [1], [2] |
| * SAS #3 | 20+34.55 | RT-9.09 | 852.10 | 839.51 | 12.59 | [1], [2] |
| POWERS AVE | | | | | | |
| SAS #4 | 14+01.06 | CL | 852.42 | 839.62 | 12.80 | [1], [2] |
| SAS #5 | 10+69.98 | CL | 855.05 | 840.15 | 14.90 | [1] |
| SAS #5A | 10+41.55 | RT-8.11 | 855.02 | 847.50 | 7.52 | [1] |
| WORTHINGTON AVE | | | | | | |
| SAS #6 | 3+69.12 | CL | 851.90 | 840.65 | 11.25 | [1], [2] |
| SAS #7 | 0+35.50 | LT-8.77 | 853.59 | 841.18 | 12.41 | [1] |

SANITARY STRUCTURE REMOVALS

| STRUCTURE ID NO. | STATION | LOCATION (OFFSET) | TOP OF CASTING | E.I. | DEPTH | NOTES |
|------------------------|----------|-------------------|----------------|--------|-------|-------|
| THURBER AVE | | | | | | |
| SAS #6238-004 | 26+87.68 | RT-0.01 | 853.26 | 840.42 | 12.84 | - |
| SAS #6138-031 | 26+06.22 | RT-4.76 | 852.76 | 838.54 | 14.22 | - |
| SAS #6138-030 | 23+58.16 | RT-4.81 | 851.82 | 838.76 | 13.06 | - |
| SAS #6138-029 | 20+34.55 | RT-9.09 | 852.26 | 839.58 | 12.68 | - |
| WORTHINGTON AVE | | | | | | |
| SAS #6138-025 | 6+93.19 | LT-11.48 | 855.10 | 840.32 | 14.78 | - |
| SAS #6138-024 | 3+69.19 | LT-9.96 | 852.00 | 840.90 | 11.10 | - |
| SAS #6038-032 | 0+35.50 | LT-8.77 | 853.71 | 841.39 | 12.32 | - |

PROPOSED SANITARY PIPES

| FROM (DNSTM) | TO (UPSTM) | DWNSTRM E.I. | UPSTRM E.I. | PLAN (PAY) LGTH (FT) | SLOPE (%) | PIPE SIZE | PVC TYPE | NOTES |
|------------------------|---------------------|-------------------|-------------------|----------------------|------------------|---------------|-------------------|-------|
| THURBER AVE | | | | | | | | |
| * THURBER LS | SAS #1 | 838.50 | 838.58 | 52 | 0.15% | 15" | SDR-26 | - |
| * SAS #1 | SAS #1A | 838.68 | 839.09 | 82 | 0.50% | 12" | SDR-26 | - |
| * SAS #1 | SAS #2 | 838.61 | 838.98 | 248 | 0.15% | 15" | SDR-26 | - |
| * SAS #2 | SAS #3 | 839.01 | 839.51 | 324 | 0.15% | 15" | SDR-26 | - |
| * SAS #2 | COUPLING | 844.46 | 844.50 | 0 | 0.44% | 8" | SDR-35 | |
| POWERS AVE | | | | | | | | |
| * SAS #3 | SAS #4 | 839.54 | 839.62 | 41 | 0.18% | 15" | SDR-26 | - |
| SAS #4 | SAS #5 | 839.65 | 840.15 | 331 | 0.15% | 15" | SDR-26 | - |
| SAS #5 | SAS #5A | 846.02 | 847.00 | 30 | 3.31% | 8" | SDR-35 | - |
| WORTHINGTON AVE | | | | | | | | |
| SAS #5 | SAS #6 | 840.18 | 840.65 | 316 | 0.15% | 15" | SDR-26 | - |
| SAS #6 | SAS #7 | 840.68 | 841.18 | 334 | 0.15% | 15" | SDR-35 | - |
| SAS #6 | COUPLING | 841.41 | 841.62 | 12 | 1.67% | 8" | SDR-35 | - |

SANITARY PIPES REMOVALS

| REMOVE FROM | REMOVE TO | TOTAL LGTH (FT) | PAY LGTH (FT) | PIPE SIZE | PIPE TYPE | NOTES |
|--------------------|---------------|-----------------|---------------|-----------|-----------|-------|
| THURBER AVE | | | | | | |
| * SAS #6138-031 | SAS #6238-004 | 78 | 0 | 12" | RCP | - |
| * SAS #6138-030 | SAS #6138-029 | 320 | 0 | 12" | RCP | - |
| * SAS #6138-031 | SAS #6138-030 | 244 | 0 | 12" | RCP | - |

SANITARY PIPES ABANDONMENTS

| REMOVE FROM | REMOVE TO | LGTH (FT) | PIPE SIZE | PIPE TYPE | PAID (Y/N) | NOTES |
|------------------------|---------------|-----------|-----------|-----------|------------|---------------|
| POWERS AVE | | | | | | |
| SAS #6138-029 | SAS #6138-025 | 356 | 12" | RCP | Y | 16 PLUGS |
| SAS #6138-025 | SAS #5A | 35.00 | 8" | VCP | N | ABAN W/ PLUGS |
| WORTHINGTON AVE | | | | | | |
| SAS #6138-025 | SAS #6138-024 | 320 | 12" | RCP | Y | 6 PLUGS |
| SAS #6138-024 | SAS #6038-032 | 330 | 12" | RCP | Y | 1 PLUG |

SPECIFIC NOTES

- [1] INSTALL EXTERNAL SAS JOINT WRAP IN ACCORDANCE WITH S.D.D. 5.7.2
- [2] INSTALL INTERNAL CHIMNEY SEAL IN ACCORDANCE WITH S.D.D. 5.7.17